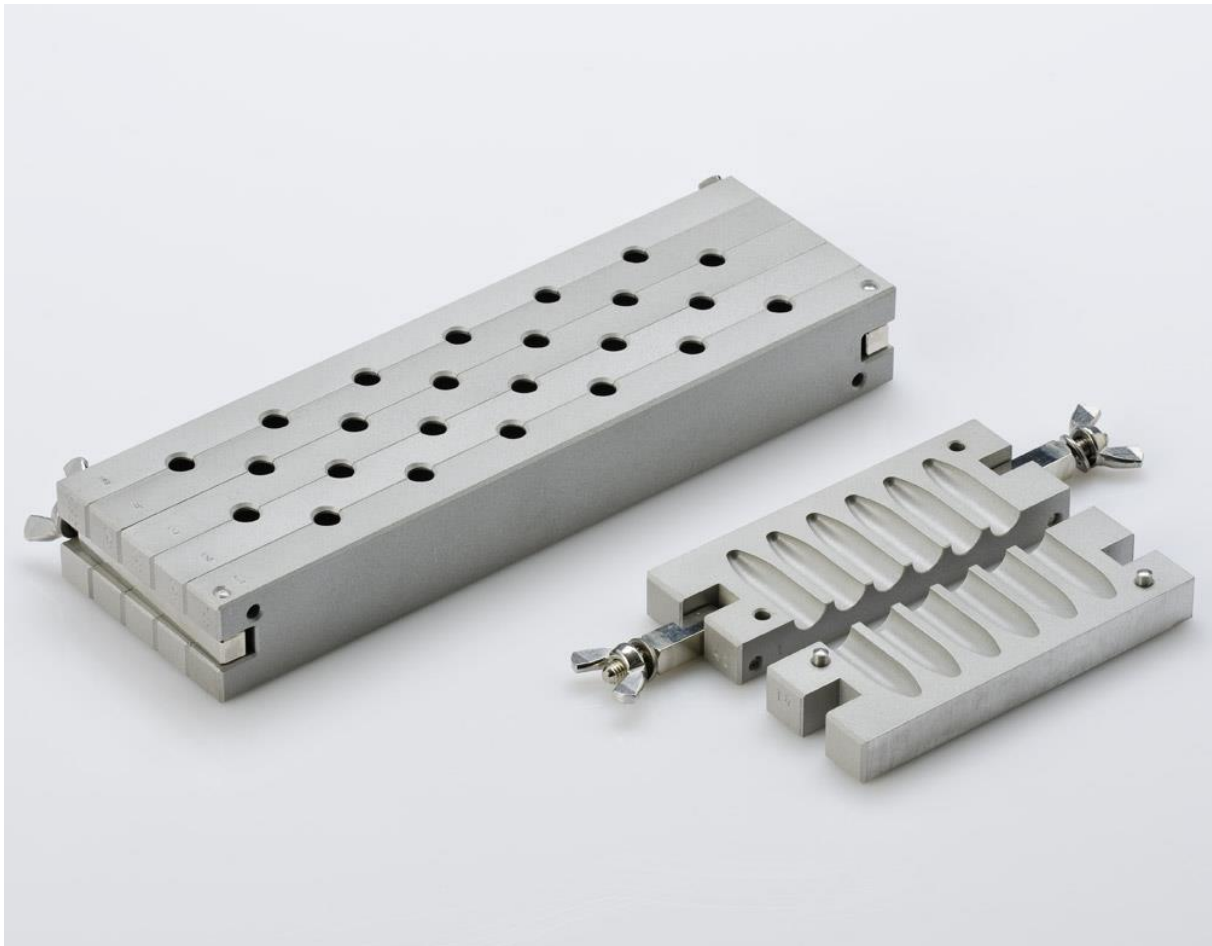


## Shaped Molds

**For Rectal Suppositories and Vaginal Globules with 24, 30, 48, 60, 100 or 150 Cavities x 1, 2, 3 up to 8g**

These are standard types of molds for rectal suppositories and vaginal globules. Their design respects the experience and requirements of pharmaceutical and medical practice. The molds are made of Duralumin (AlCu4Mg1). Their inner surface is coated with Silicon Resin which prevents the contact of the molded material with the metal of the mold, and guarantees maximum inertness of the mold. The construction of the molds guarantees long-lasting functional properties and quality.

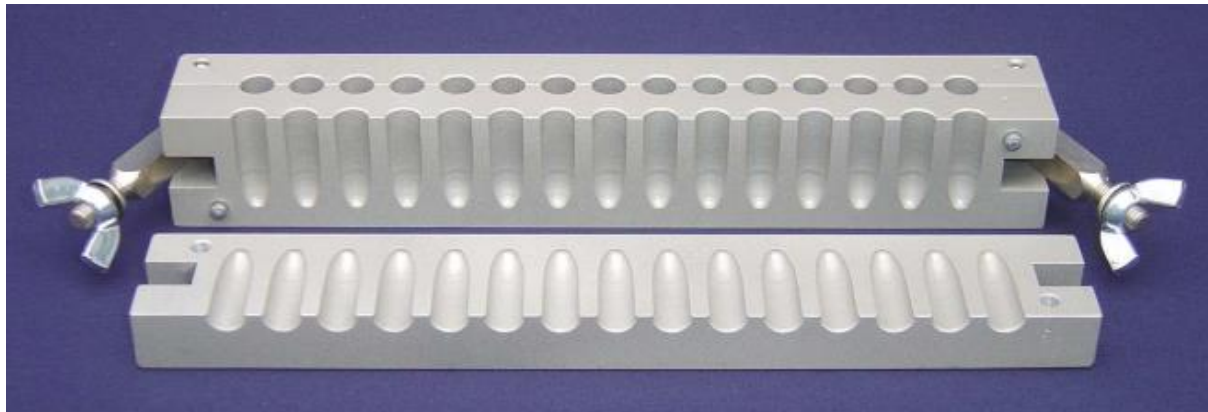


Standard Type of Molds



## Available Moulds

### "Projectile" Shaped Suppositories

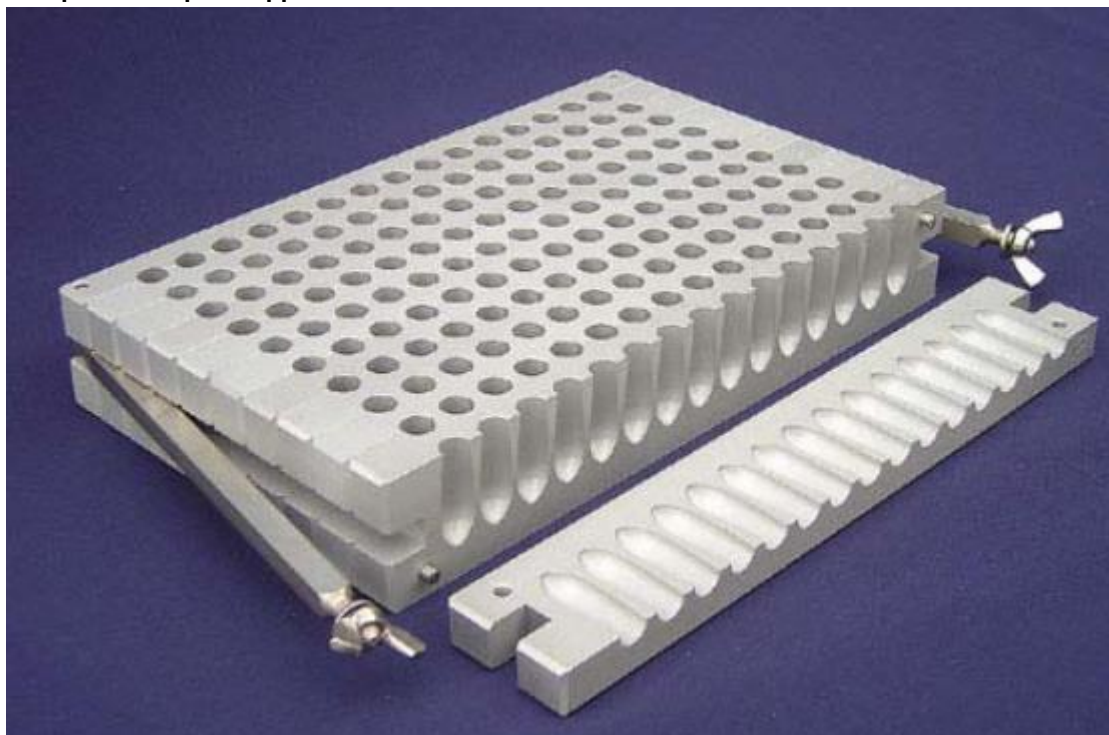


Suppository Mould (Projectile)	30 x 1g (ml)	30 x 2g (ml)	30 x 3g (ml)	30 x 4g (ml)
Part No.	441-2260	441-2261	441-2262	441-2263
Dimensions (mm)	210 x 60 x 31	228 x 60 x 39	244 x 60 x 39	260 x 60 x 39
Approx. Net Weight (g)	780	920	1080	1150

Suppository Mould (Projectile)	60 x 1g (ml)	60 x 2g (ml)	60 x 3g (ml)	60 x 4g (ml)
Part No.	441-2264	441-2265	441-2266	441-2267
Dimensions (mm)	210 x 90 x 31	228 x 90 x 39	244 x 90 x 39	260 x 90 x 39
Approx. Net Weight (g)	1250	1450	1640	1690

Suppository Mould (Projectile)	100 x 1g (ml)	100 x 2g (ml)	100 x 3g (ml)	100 x 4g (ml)
Part No.	441-2268	441-2269	441-2270	441-2271
Dimensions (mm)	150 x 180 x 31	163 x 170 x 39	174 x 170 x 39	185 x 175 x 39
Approx. Net Weight (g)	2050	2260	2320	2450

Suppository Mould (Projectile)	150 x 1g (ml)	150 x 2g (ml)	150 x 3g (ml)	150 x 4g (ml)
Part No.	441-2272	441-2273	441-2274	441-2275
Dimensions (mm)	210 x 180 x 31	228 x 170 x 39	244 x 170 x 39	260 x 175 x 39
Approx. Net Weight (g)	2670	3370	3480	3550

**"Torpedo" Shaped Suppositories**

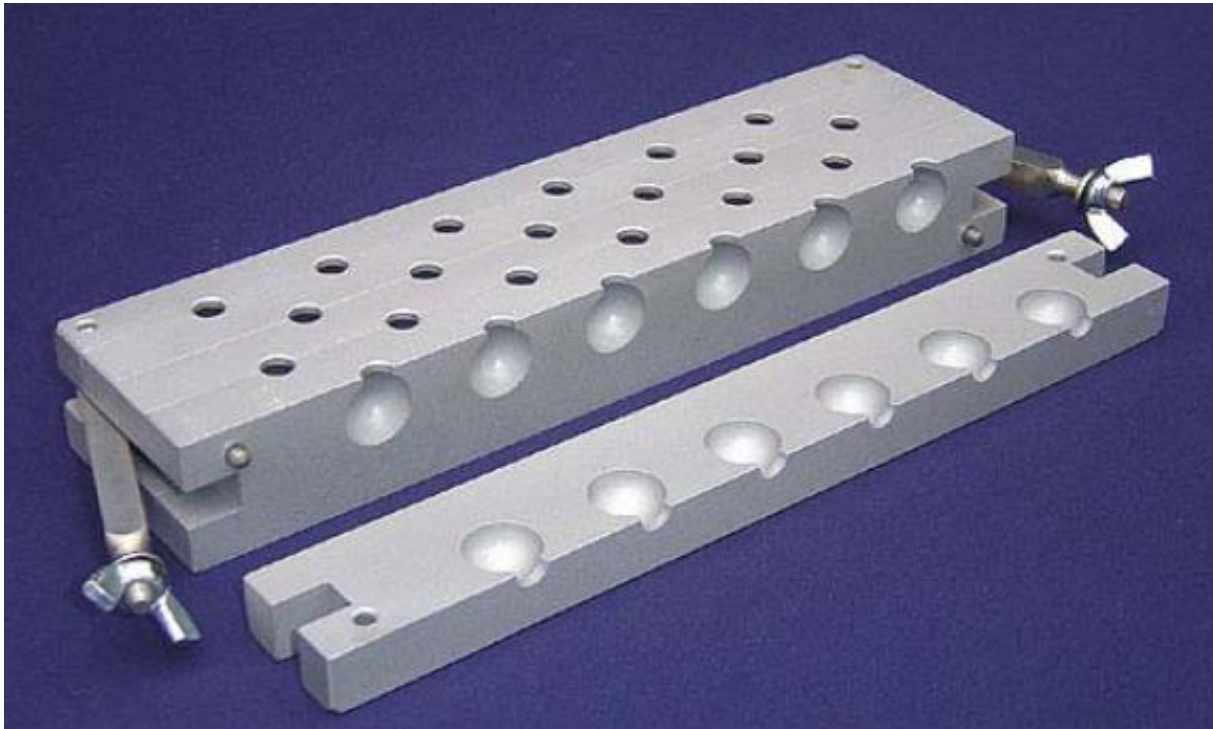
Suppository Mould (Torpedo)	30 x 1g (ml)	30 x 2g (ml)	30 x 4g (ml)
Part No.	441-2280	441-2281	441-2282
Dimensions (mm)	210 x 60 x 31	228 x 60 x 39	260 x 60 x 39
Approx. Net Weight (g)	441-2280	441-2281	441-2282

Suppository Mould (Torpedo)	60 x 1g (ml)	60 x 2g (ml)	60 x 4g (ml)
Part No.	441-2283	441-2284	441-2285
Dimensions (mm)	210 x 90 x 31	228 x 85 x 39	260 x 90 x 39
Approx. Net Weight (g)	1250	1580	1480

Suppository Mould (Torpedo)	100 x 1g (ml)	100 x 2g (ml)	100 x 4g (ml)
Part No.	441-2286	441-2287	441-2288
Dimensions (mm)	150 x 180 x 31	163 x 170 x 39	185 x 175 x 39
Approx. Net Weight (g)	1960	2220	2100

Suppository Mould (Torpedo)	150 x 1g (ml)	150 x 2g (ml)	150 x 4g (ml)
Part No.	441-2289	441-2290	441-2291
Dimensions (mm)	210 x 180 x 31	228 x 180 x 39	260 x 170 x 39
Approx. Net Weight (g)	2670	3380	2900

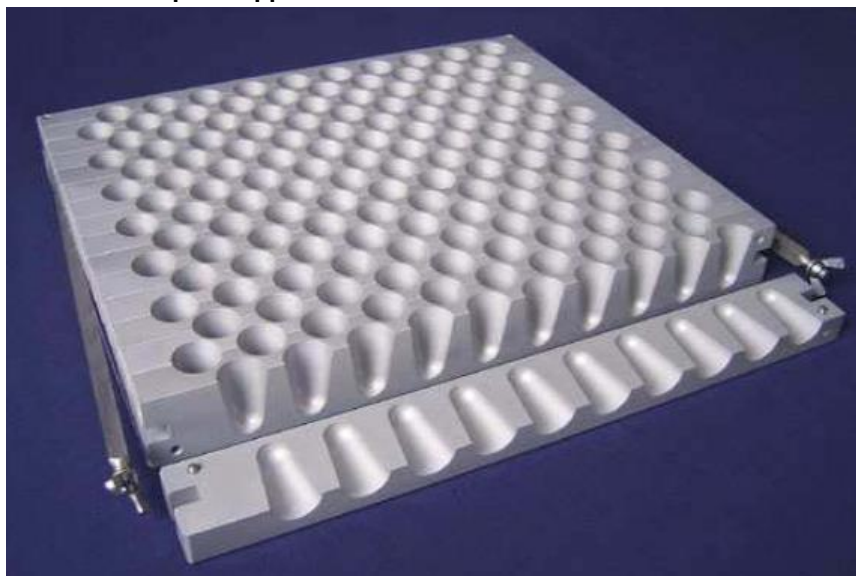
### "Conical" Shaped Suppositories



Suppository Mould (Conical)	24 x 2g (ml)	24 x 3g (ml)	48 x 2g (ml)	48 x 3g (ml)
<b>Part No.</b>	441-2300	441-2301	441-2302	441-2303
<b>Dimensions (mm)</b>	226x85x31	226x85x31	226x140x31	226x140x31
<b>Approx. Net Weight (g)</b>	1300	1220	2280	2120

We reserve the right to make technical changes without any prior notice.

### "Conical" Shaped Suppositories



Suppository Mould (Conical)	30 x 1g (ml)	30 x 2g (ml)	30 x 3 g (ml)	30 x 4g (ml)	30 x 6g (ml)	30 x 8g (ml)
Part No.	441-2470	441-2471	441-2472	441-2473	441-2474	441-2475
Dimensions (mm)	244x60x31	296x60x31	342x60x31	344x72x39	345x92x39	345x92x39
Approx. Net Weight (g)	820	1030	1090	1100	1450	1350

Suppository Mould (Conical)	60 x 1g (ml)	60 x 2g (ml)	60 x 3 g (ml)	60 x 4g (ml)	60 x 6g (ml)	60 x 8g (ml)
Part No.	441-2470	441-2471	441-2472	441-2473	441-2474	441-2475
Dimensions (mm)	244x60x31	296x60x31	342x60x31	344x72x39	345x92x39	345x92x39
Approx. Net Weight (g)	820	1030	1090	1100	1450	1350

Suppository Mould (Conical)	100 x 1g (ml)	100 x 2g (ml)	100 x 3 g (ml)	100 x 4g (ml)	100 x 6g (ml)	100 x 8g (ml)
Part No.	441-2470	441-2471	441-2472	441-2473	441-2474	441-2475
Dimensions (mm)	244x60x31	296x60x31	342x60x31	344x72x39	345x92x39	345x92x39
Approx. Net Weight (g)	820	1030	1090	1100	1450	1350

Suppository Mould (Conical)	150 x 1g (ml)	150 x 2g (ml)	150 x 3 g (ml)	150 x 4g (ml)	150 x 6g (ml)	150 x 8g (ml)
Part No.	441-2488	441-2489	441-2490	441-2491	441-2492	441-2493
Dimensions (mm)	244x180x31	296x180x31	342x180x31	344x224x39	345x319x39	345x319x39
Approx. Net Weight (g)	2700	3700	3300	5500	8400	7700

We reserve the right to make technical changes without any prior notice.