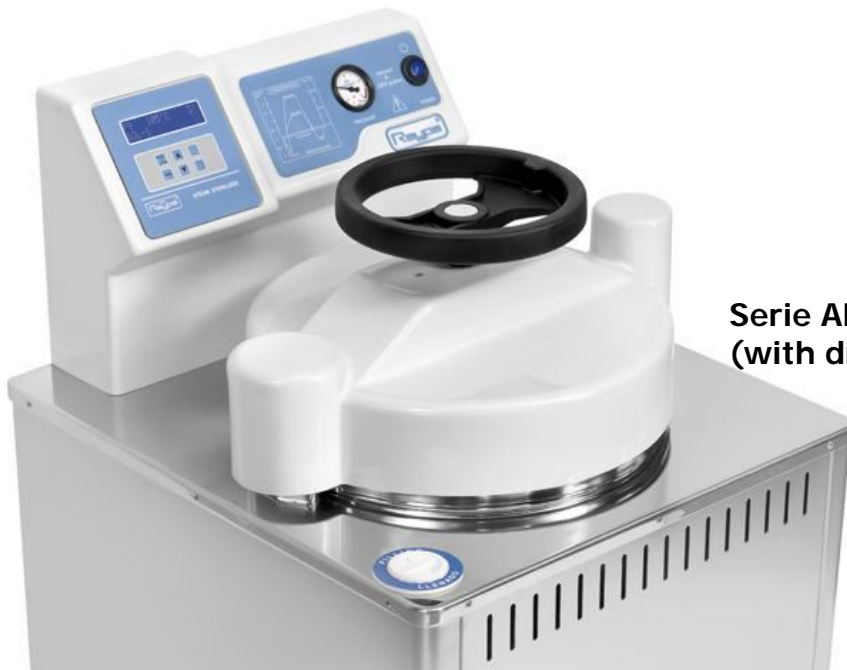


STERILMATIC steam sterilizers



Heart probe (option)

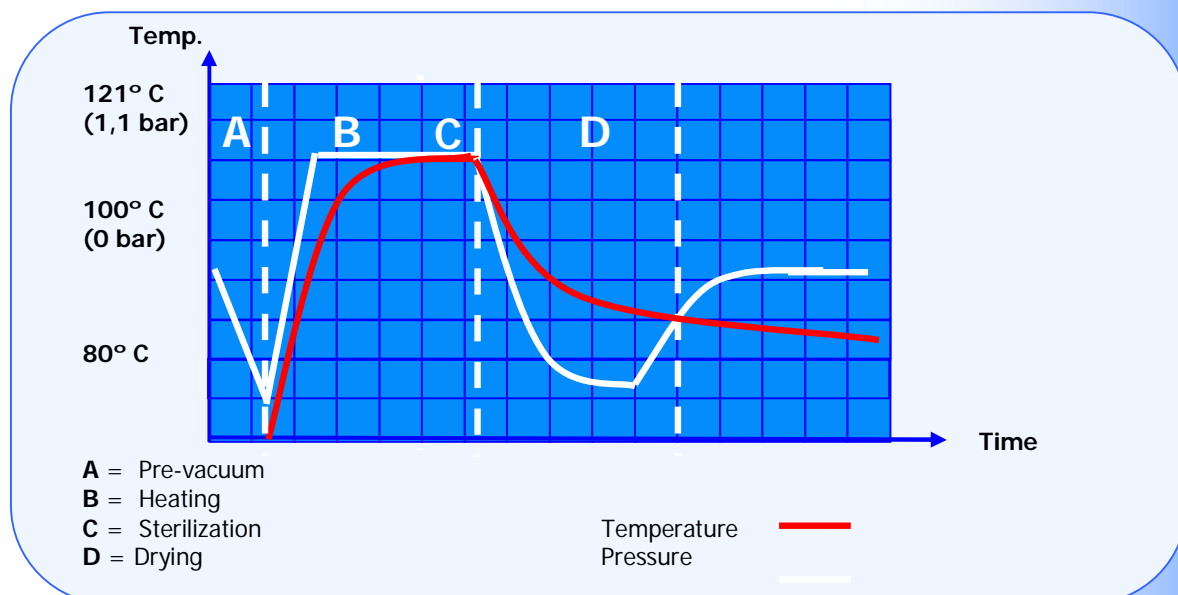
**Serie AE
(with drying)**

Advantages:

AE-75 DRY

- Programmable auto-start (24 h)
- Agar mode (40- 80° C)
- Control software (optional)
- Heart probe (optional)
- Connection to PC (USB)
- External or integrated printer (optional)

Sterilization cycle graph



Autoclaves



STERILMATIC steam sterilizers

Intended use:

Suitable to sterilize: unwrapped and wrapped solids, small porous objects and hollow ware type B (slightly deep and broad cavities), glass, plastic, liquids, metallic objects, waste bags.

Features:

External case, top, chamber and lid made of AISI-304 stainless steel
Total control by microprocessor
Ten sterilization programs. Six programs are user free.
Feeding water reservoir. Automatic water filling
Includes RS-232 port to connect a printer or to a PC.
It includes inlet in chamber for an external validation probe.
Supplied with protecting grid for the heaters.

Safety:

Safety valve and thermostat.
Hydraulic door blocking system while positive pressure exists in the chamber.
Safety pressure switch.
Open lid sensor

Reference	Litres	Ø x H.	H x L x D in cm	Temp. °C	Max. bar	Power W	Kg.	Time range
AE-28-DRY	33 L	30 x 40 cm	101 x 51 x 56	100-139	2,5	2.000	60	3 -180 min.
AE-75-DRY	79 L	40 x 60 cm	109 x 62 x 73	100-139	2,5	3.200	85	3 -180 min.
AE-110-DRY	115 L	40 x 85 cm	133 x 63 x 73	100-139	2,5	4.500	114	3 -180 min.
AE-150-DRY	175 L	50 x 75 cm	131 x 76 x 85	100-139	2,5	6.000	140	3 -180 min.

Models AES-12, AES-28 and AES-75 are supplied with 230 V mono-phase 230 V. Models AES-110 and AES-150 are supplied with 400V tri-phase supply (tri-phase 230 V optional)

STERILMATIC steam sterilizers Accessories

Stainless steel Baskets, perforated

Reference	for Autoclave	Dimensions	Nº Baskets/ autoclave	Weight kg.
CI-28	AE-28 DRY	280(Ø) x 200 mm	2	1,5
CI-75	AE-75 DRY	380(Ø) x 260 mm	2	2,5
CI-75	AE-110 DRY	380(Ø) x 260 mm	3	2,5
CI-150	AE-150 DRY	475(Ø) x 360 mm	2	4



Stainless steel Baskets, not perforated

Reference	for Autoclave	Dimensions	Nº Baskets/ autoclave	Weight kg.
CCI-28	AE-28 DRY	280(Ø) x 200 mm	2	1,5
CCI-75	AE-75 DRY	380(Ø) x 260 mm	2	2,5
CCI-75	AE-110 DRY	380(Ø) x 260 mm	3	2,5
CCI-150	AE-150 DRY	475(Ø) x 360 mm	2	4



Stainless steel wire baskets

Reference	for Autoclave	Dimensions	Nº Baskets/ autoclave	Weight kg
CV-28	AE-28 DRY	270(Ø) x 200 mm	2	1,5
CV-75	AE-75 DRY	370(Ø) x 280 mm	2	2,5
CV-75	AE-110 DRY	370(Ø) x 280 mm	3	2,5
CV-150	AE-150 DRY	470(Ø) x 250 mm	3	4



STERILMATIC steam sterilizers Accessories

Stainless steel cylinders to sterilize pipettes/Petri dishes

Reference	Dimensions	Pipettes	Petri dishes	Weight kg
CEP-7040	70 (Ø) x 400 mm	X		1
CEP-1340	130(Ø) x 400 mm	X		1
CEP-1326	130(Ø) x 260 mm		X	1
CEP-1347	130(Ø) x 400 mm		X	1



Support with height adjustable shelves

Reference	For autoclave
SRA-1	AE-28-DRY
SRA-2	AE-75-DRY
SRA-3	AE-110-DRY
SRA-4	AE-150-DRY



Thermal Printer

It prints number of program, number of cycle, temperature, date and hour of the run. Error messages are also printed. To be installed in our facilities.

Reference: IT



Table top printer

It prints number of program, number of cycle, temperature, date and hour of the run. Error messages are also printed.

Reference: ITS



STERILMATIC steam sterilizers Accessories

Flexible "Heart" probe PT-100

Recommended for sterilizing liquids in flasks of 1 L or bigger. The control is done from the microprocessor. This accessory should be installed in factory.

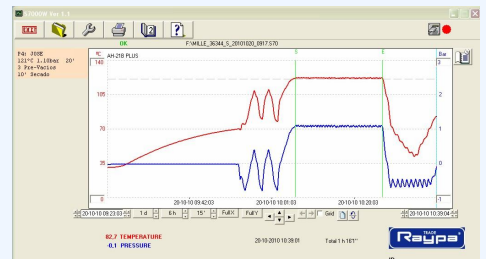
Reference: PT-2



PC connection kit for RS232

Kit for the connection and use of the communication software between the equipment and the PC, through the RS232 interface. It includes: Female USB-RS232 Converter. CD with corresponding drivers included
Male-male DB-9 cable to connect converter with the equipment

Reference: SOFT-RS232



Sterilisation control tape

Sterilisation indicator tape.

Reference: TEST-CT

